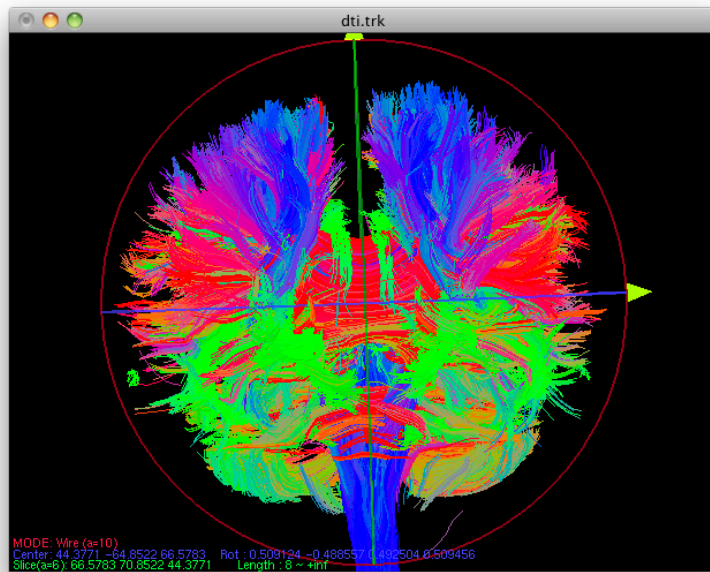


trkview

trk file viewer(Trackvis format)



	Data format name	File extension
Input data	trk file	any

Init file(optional)

~/trkview ./trkview(priority)

CENTER: 0 0 232 (x y z for the initial display)
 MIN: 8 (minimum length[number of segments])
 BACK: 10 (0-10 integer)
 ROT: -0.5 0.5 -0.5 -0.5 (rotation params for the initial display)
 SIZE: 800 800 (horizontal vertical pixels for the window)
 RADIUS: 80 (radius of the circles)
 AXIS: 2 (axis flag)
 MAXIS: 1 0 0 (rotation axis setting for movie , [0,1,1] for the default)
 XCOLOR: 1 0 0 (color setting for X-direction)
 YCOLOR: 0 0 1 (color setting for Y-direction)
 ZCOLOR: 0 1 0 (color setting for Z-direction)

Key control

Keys	Modifier	Function
f		fiber
p		points->fiber edge points
c		x->y->z fiber display
C		fiber coloring <-> segment coloring
f	(shift,option)*	rotation along the horizontal axis
l	(shift,option)*	rotation along the horizontal axis
→	(shift,option)*	rotation along the vertical axis
←	(shift,option)*	rotation along the vertical axis
HOME		rotation along the depth axis
END		rotation along the depth axis
PAGEUP,-		shift along the depth axis(Far)
PAGEDOWN,+		shift along the depth axis(Near)
a		toggle the axis and the frame display
m		keep the position as milestone
r		retrieve the milestone position
R		retrieve the milestone position (depth setting is kept)
<space>		movie start/stop
>		speed-up the movie
<		speed-down the movie
d		back to the default position
D		back to the default position(depth setting is kept)
v		perspective/orthogonal view change
i		display the info in the terminal
I		information display on/off
l		light on/off
x		put the orthogonal plane to X axis and display only crossing fibers
y		put the orthogonal plane to Y axis and display only crossing fibers
z		put the orthogonal plane to Z axis and display only crossing fibers
b		disable slice constraint
2		shift the plane(+1)
8		shift the plane(-1)
4		adjust the fiber length limit(-1)
6		adjust the fiber length limit(+1)
5		section mode on/off for the point display
t		alpha value change for the slices or the fibers

T		alpha value change for the slices or the fibers
/		flip L/R (available for perspective view mode)
q,Q		quit the program

* rotation step(5 deg as default, 10 deg with shift and 30 deg with option)

```
>trkview
----- TRK Viewer -----
usage: trkview datafile <RET>

datafile : TRK BINARY data
-----
Compiled [Apr 10 14:52:54 2018] Edited [Apr 10 15:01:12 2018]
```

Additional information

Related commands

```
trktrans
```

by Ken